



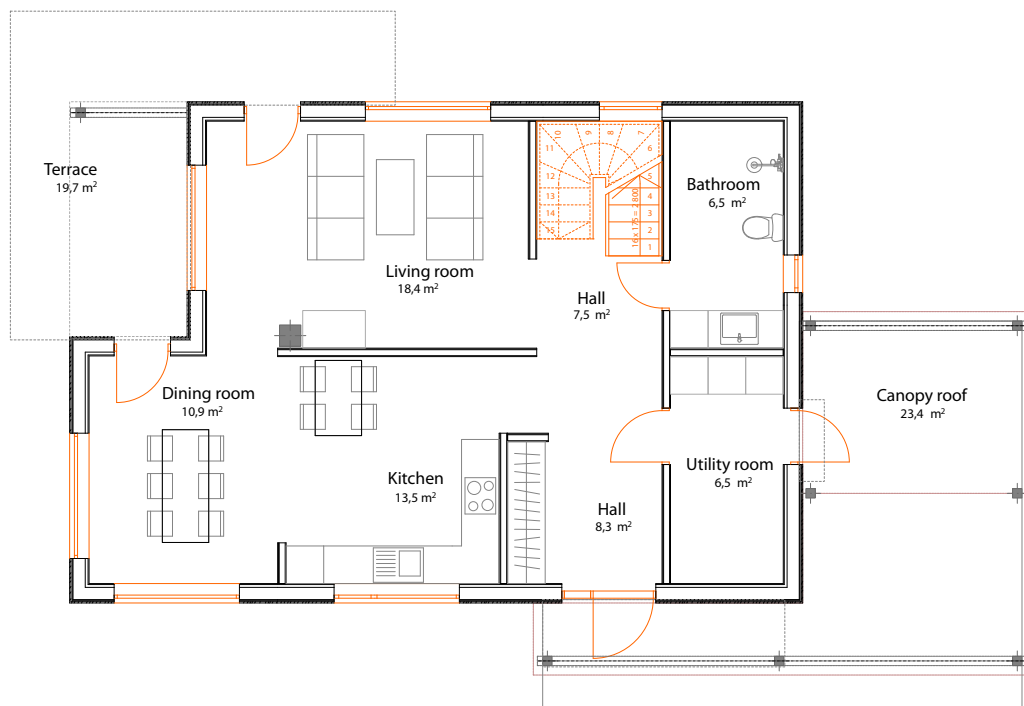
**2 living rooms**  
**Open kitchen+dining room**  
**4 bedrooms**  
**2 bathrooms+WC**  
**Utility room**

## Prebuilt element house Monika 146 m<sup>2</sup>

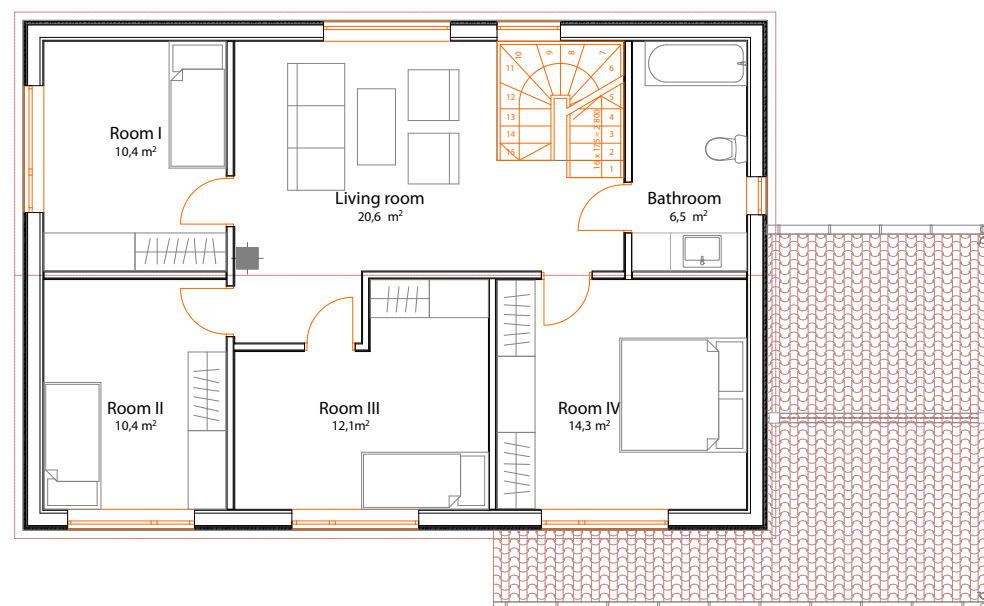
Living area	145,9 m <sup>2</sup>
Balconies, terraces and canopy roofs	43,1 m <sup>2</sup>
External area	124,1 m <sup>2</sup>
Roof angle	25 °
Height (± from 0.00)	7,1 m



## Prebuilt element house Monika 146 m<sup>2</sup>



1st floor



2nd floor